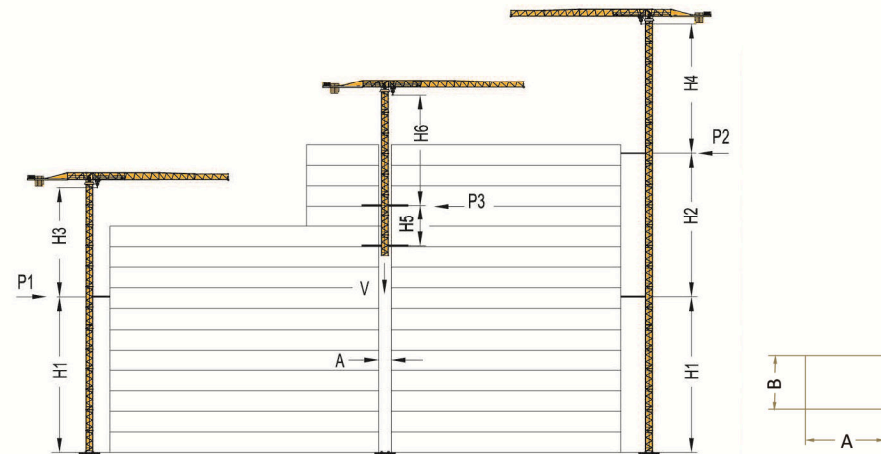


附着 Anchorages



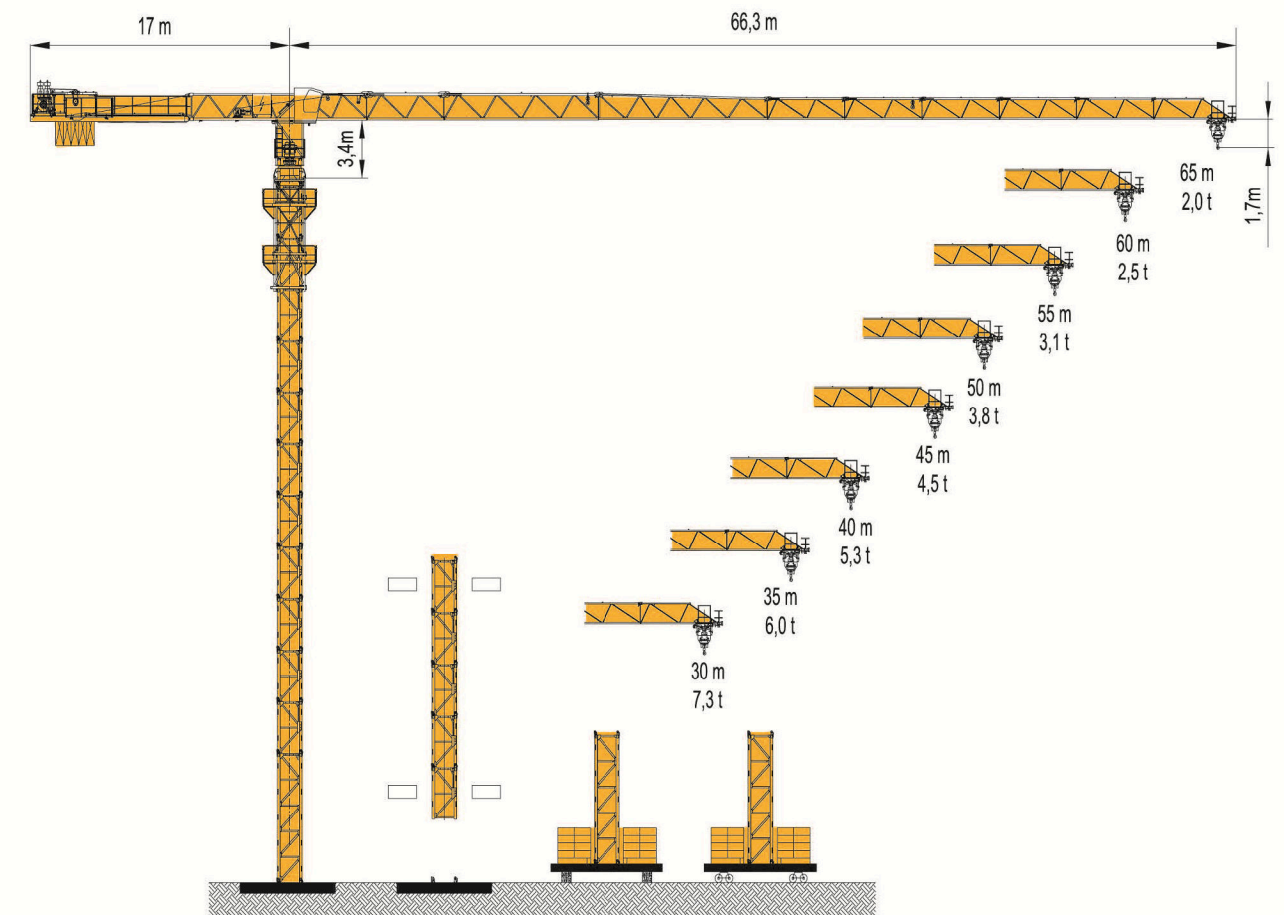
塔身 Mast	TG20B		
	m	工作状态 Working t	非工作状态 Off Working t
H1	48,0	—	—
H2	36,0	—	—
H3	48,5	—	—
H4	48,5	—	—
H5	12,0 - 21,0	—	—
H6	12,0 - 27,0	—	—
P1	—	16,8	27,3
P2	—	11,4	28,0
P3	—	14,4	27,5
V	—	78,7	68,5
A	2,6		
B	2,2		

机构性能 Mechanisms

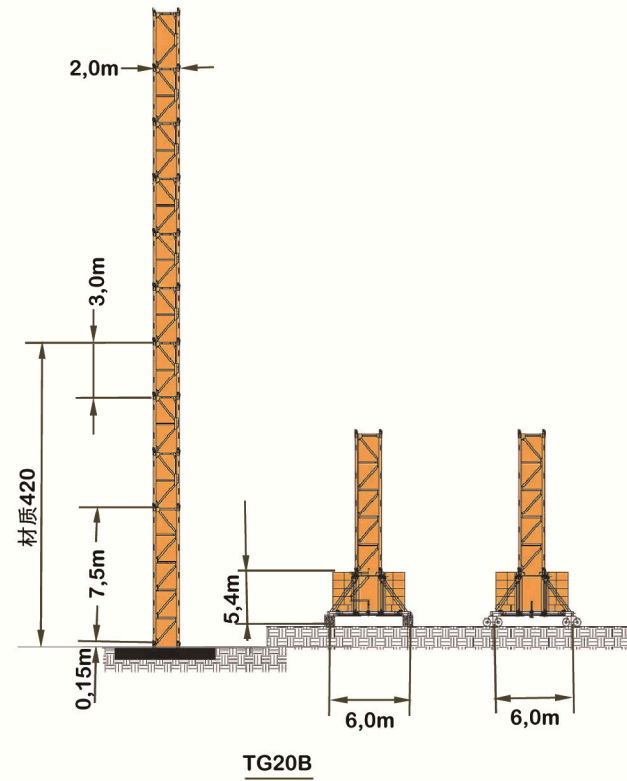
机构特性 Mechanisms specification		⊙		⊙		⊙		kW		
起升 Hoisting	m/min	0-108	0-72	0-36	0-54	0-36	0-18	450m	37/37	
		t	1,5	3,0	6,0	3,0	6,0			12,0
	m/min	0-80	0-40		0-40		0-20		550m	可选项 Options! winch
		t	2,5	5,0		5,0		10,0		
变幅 Trolleying	m/min	0-58								95Nm
回转 Slewing	r/min	0,55								95Nm × 2
行走 Travelling	m/min	22/11								3,4/1,7 × 4
电源 Power Supply		380V 50Hz / 440V 60Hz								
供电容量 Necessary Electric Power		62kVA / 80kVA								

沈阳宝泉商贸有限公司
地址: 辽宁省沈阳市大东区东北大马路264号, 509-511室
电话: 0086-24-26210512
传真: 0086-415-3165597
邮箱: bqswgs@163.com
网址: http://www.bq-sy.com

SHENYANG BAOQUAN BUSINESS CO., LTD
ADD: ROOM NO.509-511, NO.264 DONGBEI DAMALU ROAD, DADONG DISTRICT, SHENYANG CHINA
Tel: 0086-24-26210512
Fax: 0086-415-3165597
E-mail: bqswgs@163.com
Url: http://www.bq-sy.com



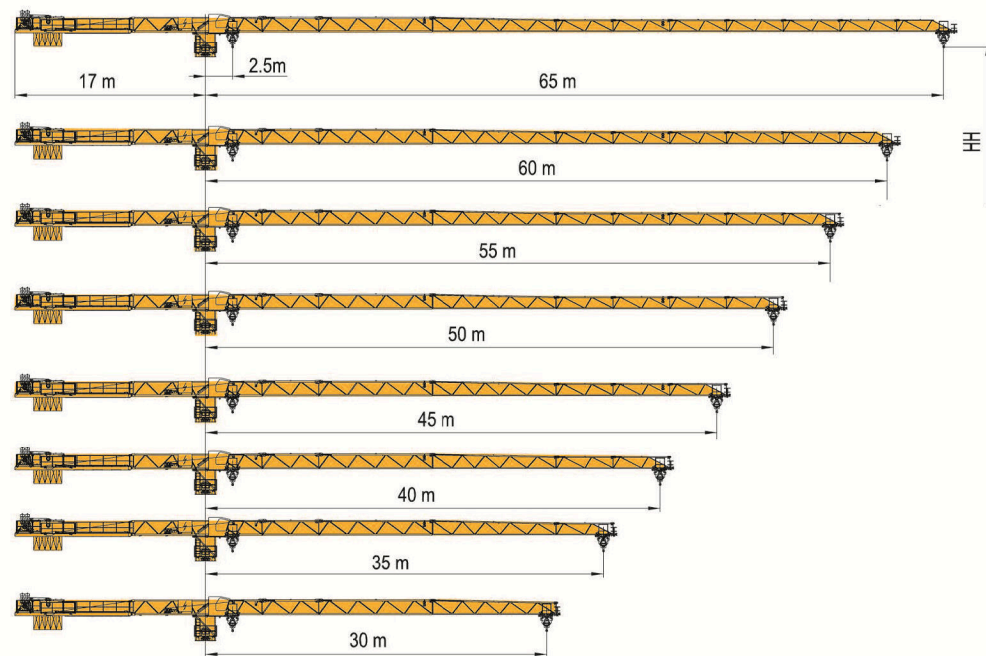
塔身 Tower



塔身 Mast		臂架长度 Boom							
No.	HUH (m)	30	35	40	45	50	55	60	65
1	9,6	●	●	●	●	●	●	●	●
2	12,6	●	●	●	●	●	●	●	●
3	15,6	●	●	●	●	●	●	●	●
4	18,6	●	●	●	●	●	●	●	●
...	...	●	●	●	●	●	●	●	●
12	42,6	●	●	●	●	●	●	●	●
13	45,6	●	●	●	●	●	●	●	●
14	48,6	●	●	●	●	●	●	●	●
15	51,6	●	●	●	●	●	●	●	●
16	54,6	●	●	●	●	●	●	●	●
17	57,6	●	●	●	●	●	●	●	●
18	60,6	●	●	●	●	●	●	●	●

塔身 Mast		臂架长度 Boom							
No.	HUH (m)	30	35	40	45	50	55	60	65
1	9,5	●	●	●	●	●	●	●	●
2	12,5	●	●	●	●	●	●	●	●
3	15,5	●	●	●	●	●	●	●	●
4	18,5	●	●	●	●	●	●	●	●
...	...	●	●	●	●	●	●	●	●
12	42,5	●	●	●	●	●	●	●	●
13	45,5	●	●	●	●	●	●	●	●
14	48,5	●	●	●	●	●	●	●	●
15	51,5	●	●	●	●	●	●	●	●

起重臂 Jib



载荷特性 Load Diagrams

