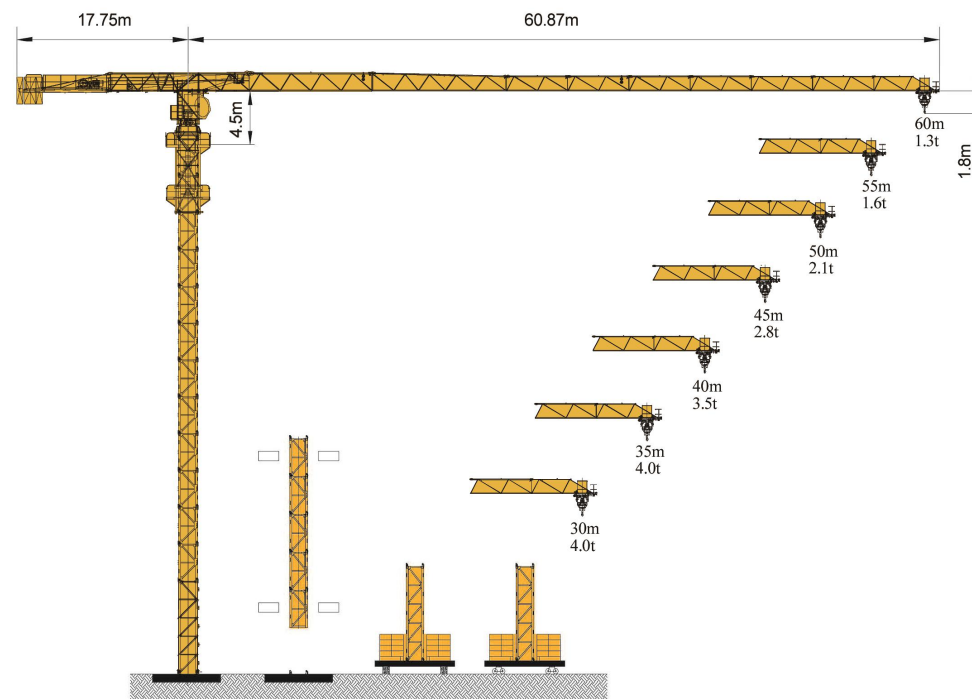


配重 Counter Weight

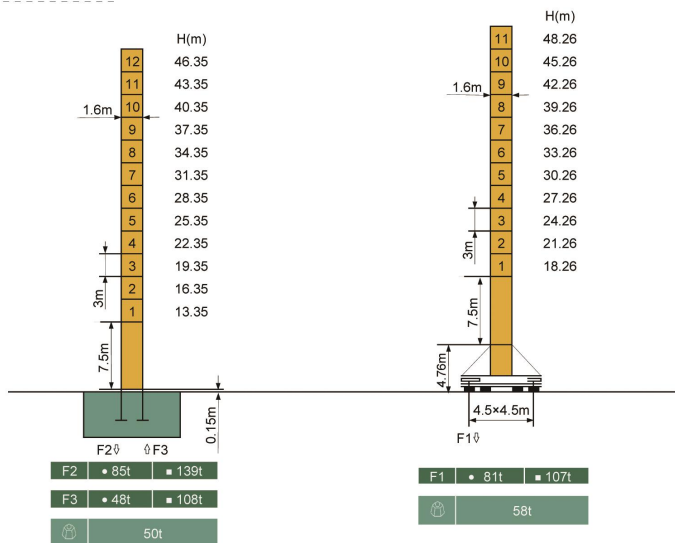
吊钩间距	塔身长度	配重
60m	17,75m	14,3t
55m	17,75m	13,1t
50m	17,75m	12,3t
45m	17,75m	10,7t
40m	17,75m	9,7t
35m	17,75m	7,9t
30m	17,75m	7,7t

机构性能 Mechanisms

机构特性 Mechanisms specification			起升		变幅		回转		行走		电源		供电容量		
起升 Hoisting	37LVF	m/min	0-5	0-20	0-40	0-61	0-82	0-2,5	0-10	0-20	0-30,5	0-41	490m	37	
		t	4	4	4	2	1	8	8	8	4	2			
变幅 Trolleying	4TVF	m/min	0 - 55												4
	4T3V4	m/min	7,2 / 30 / 60												
回转 Slewing	5,5SVF	r/min	0 - 0,8												5,5×2
	95SVT	r/min	0 - 0,8												95Nm×2
行走 Travelling	4TRVF	m/min	0 - 12												4×4
电源 Power Supply			380V 50Hz / 440V 60Hz												
KVA 供电容量 Necessary Electric Power			60kVA												

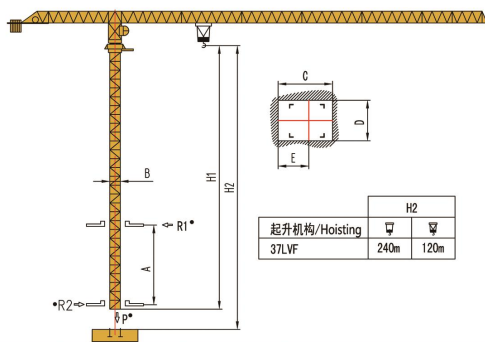


塔身 Tower



F 反力 Reactions	<ul style="list-style-type: none"> 工作状态 非工作状态 	In service Out of service	自重 Self-load 不带载荷及配重, 最大臂长及标准高度时的自重。	Without load and counter-weight with longest jib and standard height
----------------	---	------------------------------	---	--

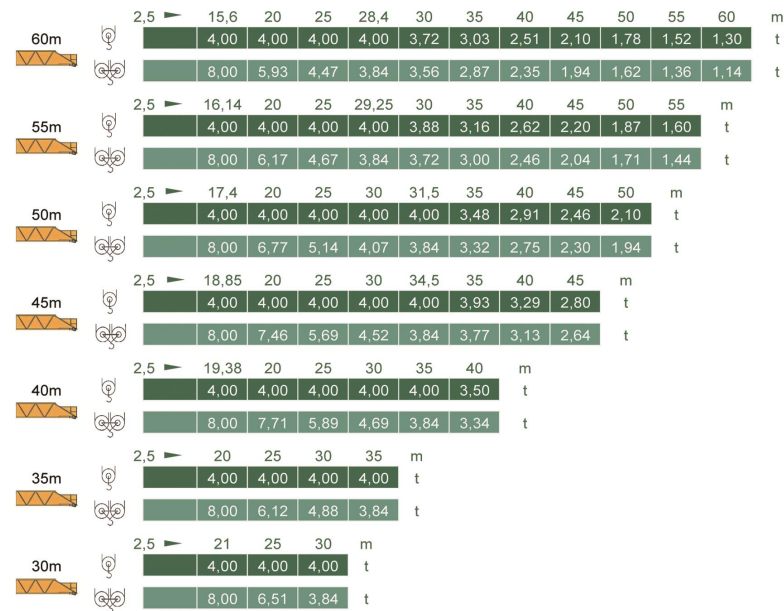
内爬塔机 Climbing Crane



A	12m-19m
B	1.6m
C	2.31m
D	1.77m
E	1.36m
H1	44.7m
R1*	24.5t
R2*	13.9t
P*	73.5t

- 工作状态无系数
- No parameter in working service

载荷特性 Load Diagrams



附着 Anchorage

