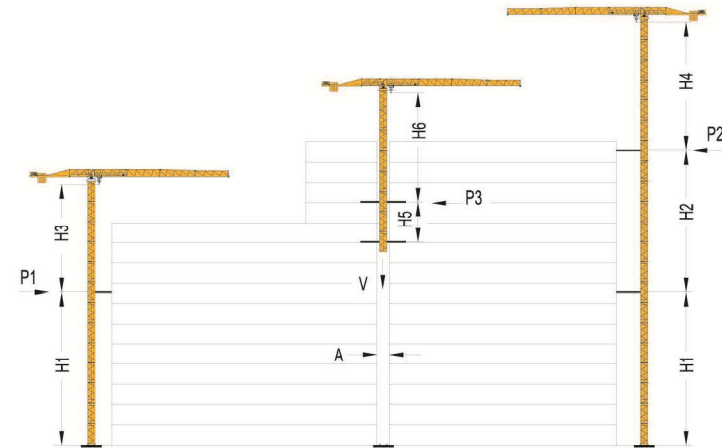


附着 Anchorages

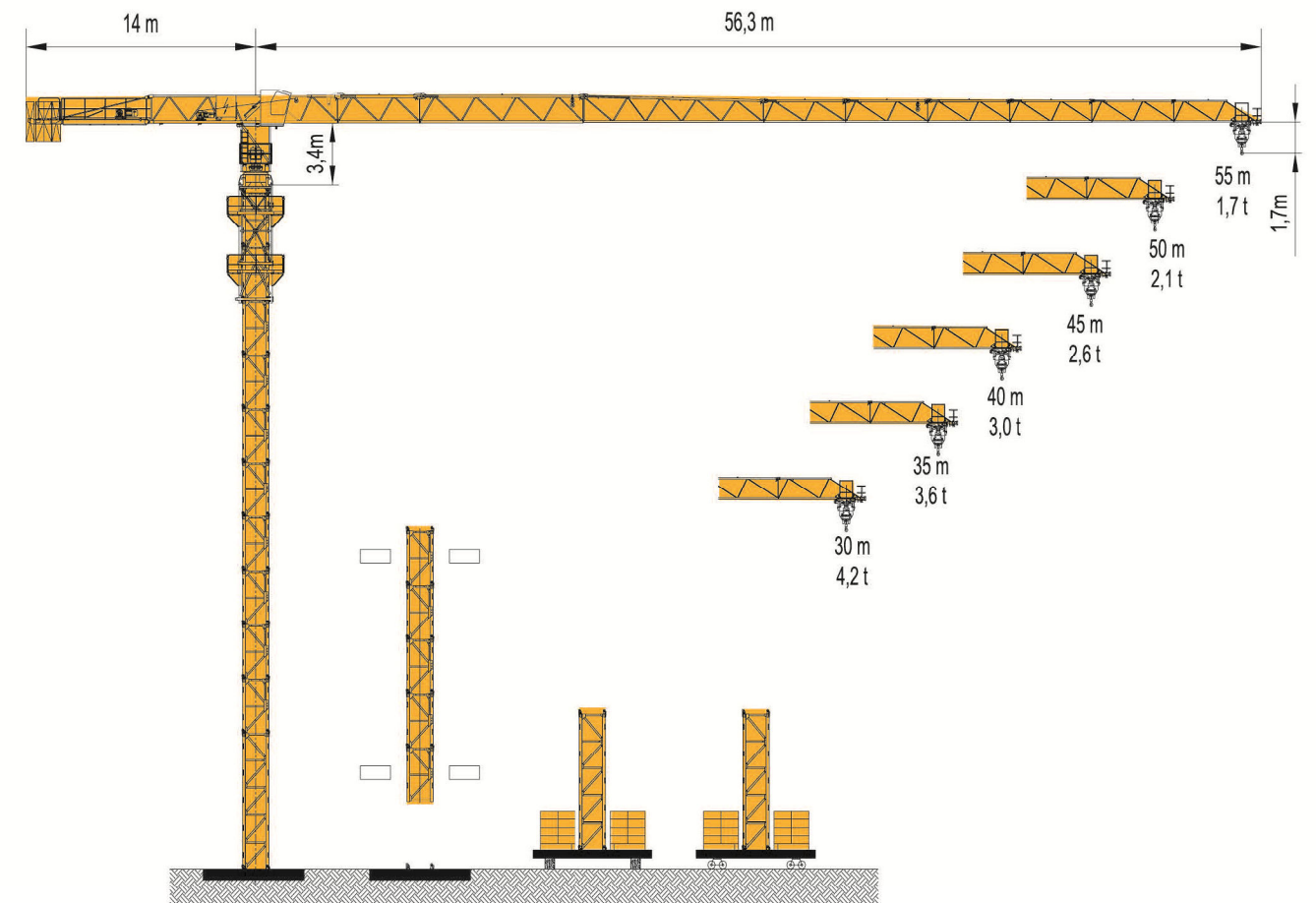


塔身 Mast	m	TG16		TG20	
		工作状态 Working t	非工作状态 Off Working t	工作状态 Working t	非工作状态 Off Working t
H1	33,0	—	—	48,0	—
H2	24,0	—	—	36,0	—
H3	35,0	—	—	48,5	—
H4	35,0	—	—	48,5	—
H5	16,0	—	—	18,0	—
H6	35,0	—	—	36,5	—
P1	—	9,2	18,8	—	11,8 27,3
P2	—	9,8	19,6	—	11,4 26,3
P3	—	10,8	17,4	—	14,4 25,5
V	—	60,2	52,2	—	68,7 60,7
A	2,2			2,6	
B	1,80			2,2	

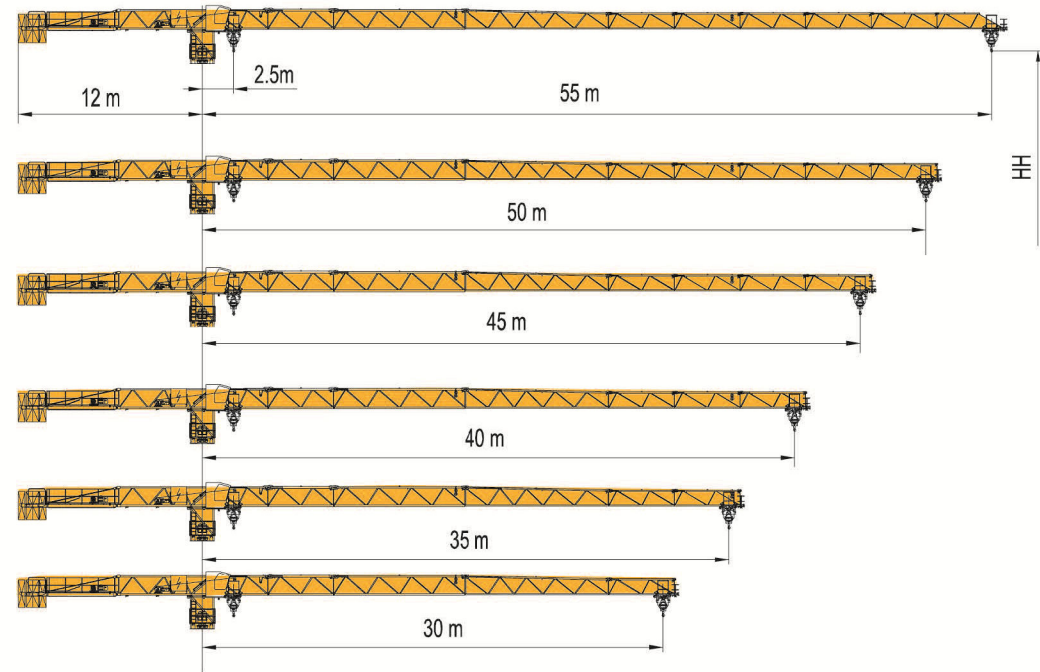


机构性能 Mechanisms

机构特性 Mechanisms specification		起升		变幅		回转		行走		电源 Power Supply		供电容量 Necessary Electric Power		
起升 Hoisting	24PQC20	m/min	56,8	28,0	5,0	28,0	14,8	2,5	410m	24/24/4,5	380V 50Hz / 440V 60Hz		43kVA / 50kVA	
		t	2,0	4,0	4,0	4,0	8,0	8,0						
变幅 Trolleying	30LVF20	m/min	80,0	40,0	40,0	20,0			450m	30	可选择 Optional winch			
		t	2,0	4,0	4,0	8,0								
变幅 Trolleying	95JXL2	m/min	0-58						95Nm					
回转 Slewing	RCV95 (JH08)	r/min	0,64						95Nm × 2					
行走 Travelling	RT443 (L68B2)	m/min	12,1 / 24,1						3,4/1,7 × 4					
	RT324 (L46A1)	m/min	12,7 / 25,4						2,6/5,2 × 2					
电源 Power Supply		380V 50Hz / 440V 60Hz												
供电容量 Necessary Electric Power		43kVA / 50kVA												



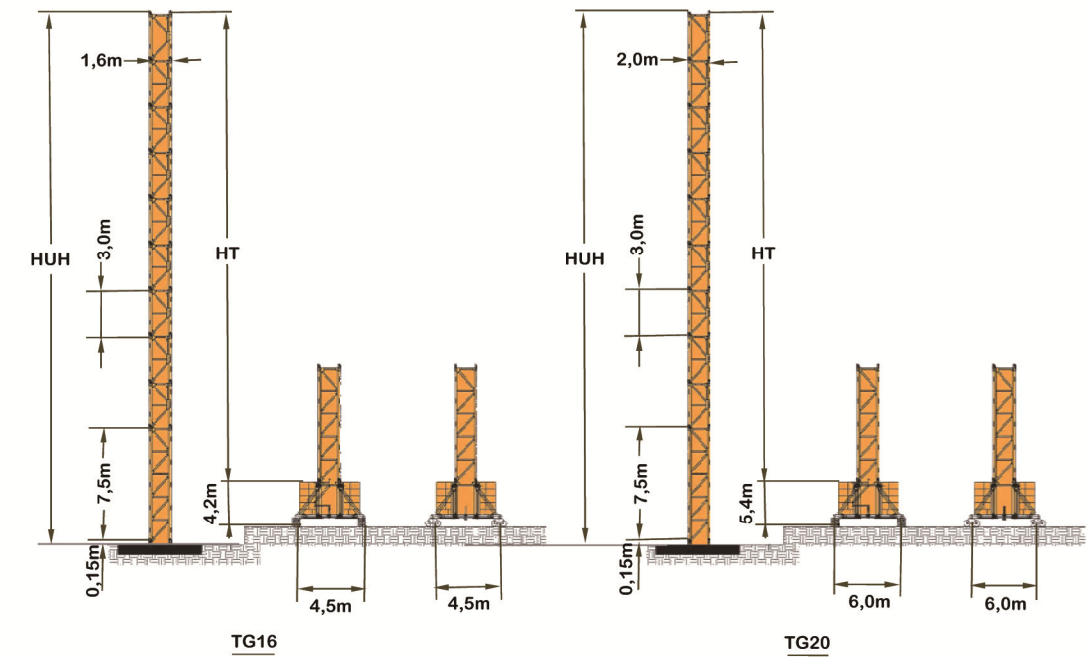
起重臂 Jib



载荷特性 Load Diagrams

臂架长度 Boom	2,5	14,4	15	18	20	23	25	26,4	26,8	30	35	40	45	50	55	m
55m	4,00	4,00	4,00	4,00	4,00	4,00	4,00	4,00	4,00	3,52	2,94	2,51	2,18	1,92	1,70	t
50m	4,00	4,00	4,00	4,00	4,00	4,00	4,00	3,83	3,21	2,74	2,39	2,10				t
45m	4,00	4,00	4,00	4,00	4,00	4,00	4,00	4,00	3,48	2,99	2,60					t
40m	4,00	4,00	4,00	4,00	4,00	4,00	4,00	4,00	3,50	3,00						t
35m	4,00	4,00	4,00	4,00	4,00	4,00	4,00	4,00	3,60							t
30m	4,00	4,00	4,00	4,00	4,00	4,00										t

塔身 Tower



固定式 Stationary type		臂架长度 Boom					
No.	塔身 Mast TG16 HT (m)	30	35	40	45	50	55
1	7,6	●	●	●	●	●	●
2	10,6	●	●	●	●	●	●
3	13,6	●	●	●	●	●	●
4	16,6	●	●	●	●	●	●
...	...	●	●	●	●	●	●
10	34,6	●	●	●	●	●	●
11	37,6	●	●	●	●	●	●
12	40,6	●	●	●	●	●	●
13	43,6	●	●	●	●	●	●

压重式或行走式 Travelling type		臂架长度 Boom					
No.	塔身 Mast TG16 HT (m)	30	35	40	45	50	55
1	11,7	●	●	●	●	●	●
2	14,7	●	●	●	●	●	●
3	17,7	●	●	●	●	●	●
4	20,7	●	●	●	●	●	●
...	...	●	●	●	●	●	●
10	38,7	●	●	●	●	●	●
11	41,7	●	●	●	●	●	●

固定式 Stationary type		臂架长度 Boom					
No.	塔身 Mast TG20 HT (m)	30	35	40	45	50	55
1	7,6	●	●	●	●	●	●
2	10,6	●	●	●	●	●	●
3	13,6	●	●	●	●	●	●
4	16,6	●	●	●	●	●	●
...	...	●	●	●	●	●	●
15	49,6	●	●	●	●	●	●
16	52,6	●	●	●	●	●	●
17	55,6	●	●	●	●	●	●
18	58,6	●	●	●	●	●	●

压重式或行走式 Travelling type		臂架长度 Boom					
No.	塔身 Mast TG20 HT (m)	30	35	40	45	50	55
1	12,9	●	●	●	●	●	●
2	15,9	●	●	●	●	●	●
3	18,9	●	●	●	●	●	●
4	21,9	●	●	●	●	●	●
...	...	●	●	●	●	●	●
15	54,9	●	●	●	●	●	●
16	57,9	●	●	●	●	●	●